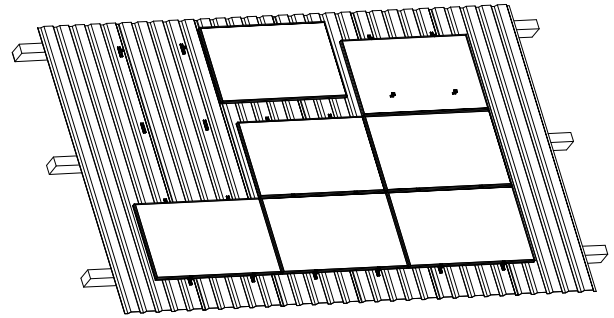


# System Datasheet

## MS+



### General

System	Mounting system for metal sheet roofs
Content	12.5 cm Mounting bracket, fastening material , module clamps
System warranty	10 years
Application area	Pitched metal sheet roof on commercial, industrial, agricultural and residential buildings
Roof covering	Trapezoidal and corrugated metal sheet of steel and aluminum Sandwich trapezoidal sheet according to manufacturer released
Metal sheet thickness	Steel: 0.4-1.25mm / Aluminum: 0.5-1.5mm
Roof slope	min. 5°, max. 45°

### System properties

Module tilt	Roof parallel
Material	Stainless steel, Aluminium and EPDM (pre-attached)

### Modules

Type	framed PV-Modules with frame height from 30 to 50 mm
Module size (max)	Length: unlimited, Width: unlimited
Orientation	Landscape

### Certifications

TÜV	ID000048970 according to 2PFG
Water tightness	MFPA 5.1/10-535
MCS012	IK0197/02 Issue: 04
ETN	BT120019
Building authority approval	Z-14.1-4, Z-14.1-537 (Fastening material)

### Services

PV layout	Provided by Renusol
-----------	---------------------